

Mile-a-minute Vine Update 2011



Donna Ellis & Logan Senack
University of Connecticut
Department of Plant Science
& Landscape Architecture



Carole Cheah & Todd Mervosh
The Connecticut Agricultural
Experiment Station

Mile-a-minute Vine

Persicaria perfoliata

(formerly *Polygonum perfoliatum*)



Vines growing along a street in Westport, CT

Mile-a-minute

- Vines form dense barbed thatch
- Triangular leaves, saucer-shaped bracts
- Sharp spines on stems, under leaves
- Blue fruits in clusters
 - Animal dispersed



Mile-a-minute in Greenwich



North Haven



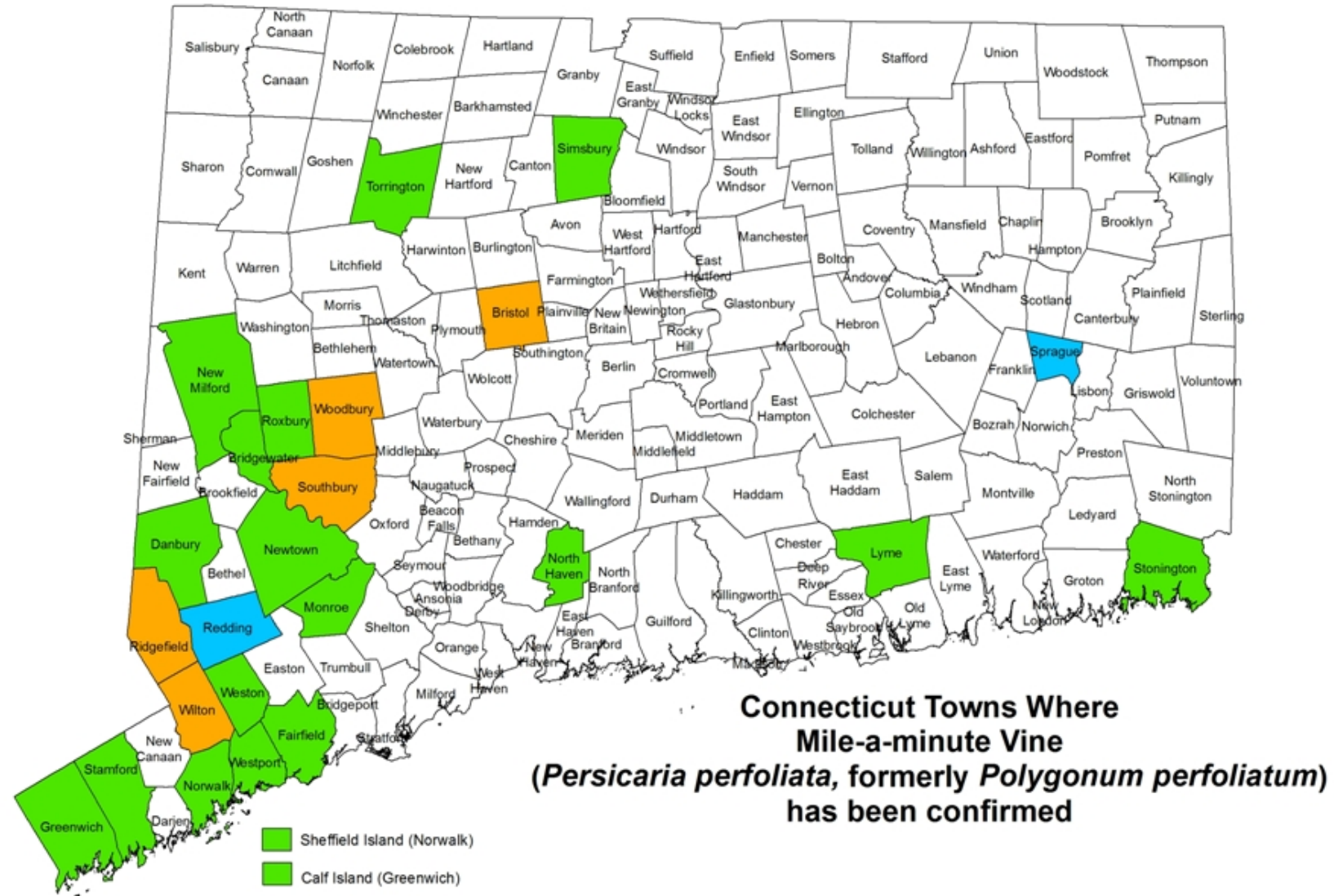
08/17/2011

Stamford

09/21/2010



In New England, mile-a-minute occurs in CT, MA and RI.



Connecticut Towns Where Mile-a-minute Vine

**(*Persicaria perfoliata*, formerly *Polygonum perfoliatum*)
has been confirmed**

☐ Sheffield Island (Norwalk)

☐ Calf Island (Greenwich)

 = NEW IN 2011

 = NEW IN 2010

Updated November 2011

Pulling Parties Sprague 2011



Pulling Party Volunteers Sprague 2011



Biological Control for Mile-a-minute Vine

Mile-a-minute Weevil (*Rhinoncomimus latipes*)

- Widely distributed in mid-Atlantic since 2006
- 2009-11: 18,000 weevils released in CT

Adult weevil



- Bridgewater
- Fairfield
- Greenwich
- New Milford
- Newtown
- North Haven
- Norwalk
- Sprague
- Stamford
- Westport

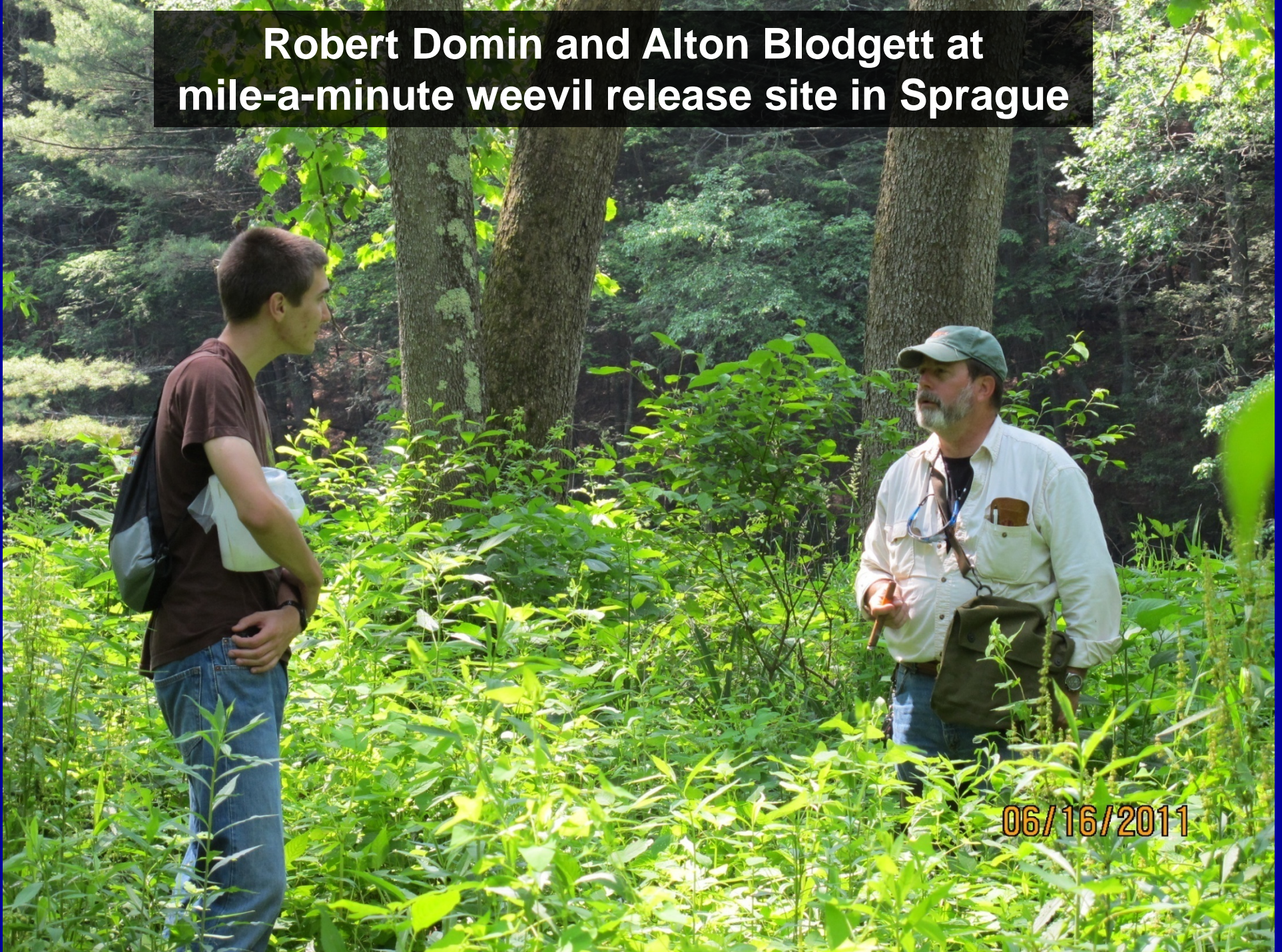
**Zack Donais, Todd Mervosh,
and Carole Cheah monitoring weevils**





**Releasing beneficial weevils for
mile-a-minute biological control**

**Robert Domin and Alton Blodgett at
mile-a-minute weevil release site in Sprague**



06/16/2011



06/16/2011

Sprague First Selectman Cathy Osten releasing weevils

**CL&P's Doug Pistawka being interviewed
by News Channel 3 at a release site in Norwalk**



06/15/2011

Todd Mervosh talks to reporters at a release site in Norwalk



06/15/2011

Carole Cheah shows the beneficial weevils to reporters before releasing them in Norwalk



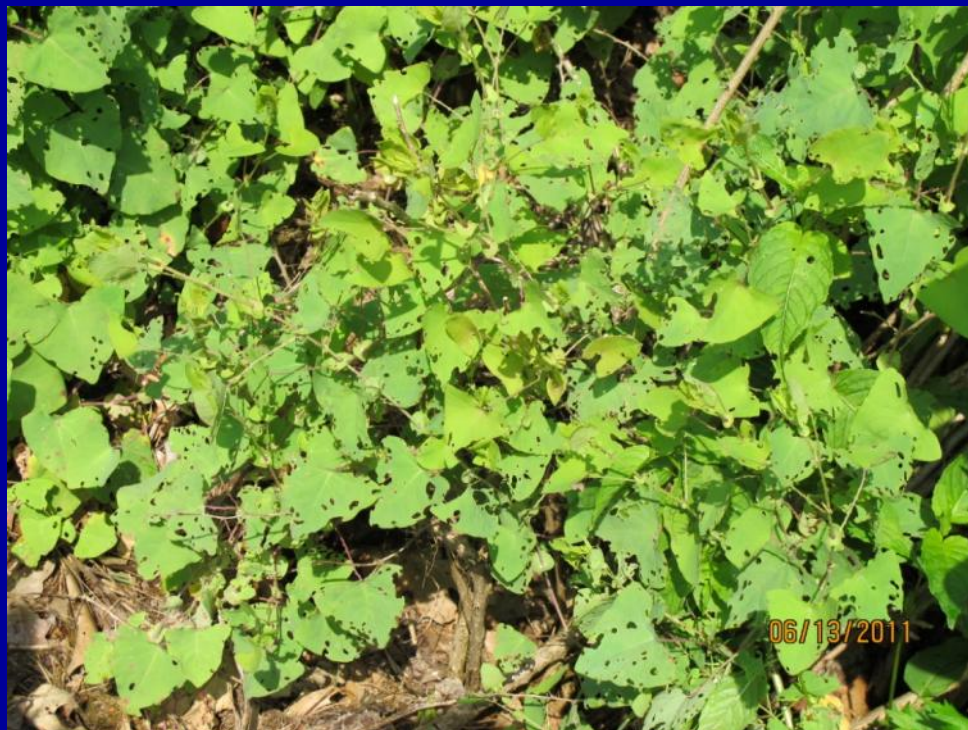


The weevils begin feeding on mile-a-minute leaves as soon as they are released.

Mile-a-minute vine monitoring site



09/14/2011



Feeding damage on mile-a-minute vines by the beneficial weevils



09/21/2010



09/09/2010



10/13/2011



10/13/2011



10/13/2011

Kathleen Nelson
Bridgewater
New Milford



Aleksandra Moch Greenwich



Ann Astarita Newtown



2012

- Educational outreach
- Pulling parties and other control methods
- Additional weevil releases in Connecticut
- Survey areas near confirmed sites



Educational outreach materials available from UConn

WANTED

Mile-a-minute Vine (MAM)

(*Persicaria perfoliata*, formerly *Polygonum perfoliatum*)



Mile-a-minute Vine is a highly invasive annual weed spreading north and east across Connecticut, Massachusetts, New York and Rhode Island. It outcompetes and overgrows native species, causing ecological and economic harm. It climbs and scrambles over trees and posts, shading out other plants (see photo at left). A single vine can grow up to 6 inches per day.

Please help us find, track and control this invasive plant.

THREE IDENTIFYING TRAITS:



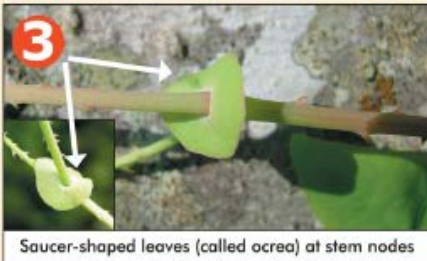
1
Triangular leaves
(often nearly equilateral)



2
Small curved barbs
along stems

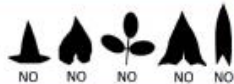


In summer, MAM fruits ripen from green to metallic blue



3
Saucer-shaped leaves (called ocrea) at stem nodes

Leaf shapes of other vines; these species do not harm ecosystems and should **not** be reported:



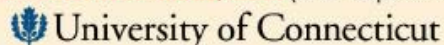
Photos courtesy of Todd Mervosh, Les Mehrhoff, Hope Leeson, Judy Hough-Goldstein and Renée Sullivan

If you observe a plant with **all 3 traits**, note its location and **report your findings**:

Contact the Connecticut Invasive Plant Working Group (CIPWG) at:
860-486-6448 (Donna Ellis, University of Connecticut)

-or-

Visit www.hort.uconn.edu/mam (click "Report MAM")

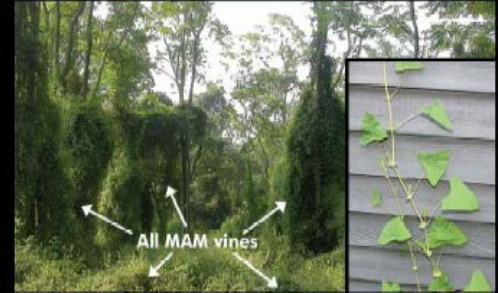


University of
Connecticut

Mile-a-minute Vine (MAM)

Persicaria perfoliata, formerly *Polygonum perfoliatum*

1. Triangular leaves—no lobes or indentations



All MAM vines

2. Small barbs along stems (fruits ripening to blue in summer)

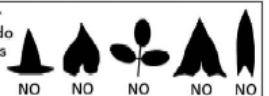


3. Saucer-shaped leaves (called ocrea) at nodes



LOOK AROUND YOUR YARD... Do you see this plant?

Leaf shapes of other vines; these species do not harm ecosystems and should **not** be reported:



Mile-a-minute Vine (Scientific name: *Persicaria perfoliata*) is a highly invasive annual weed spreading across Connecticut. It outcompetes and overgrows native species, causing ecological and economic harm. The vine scrambles over other vegetation and can climb trees and posts (see front). Mile-a-minute is deserving of its common name and its reputation as "the Kudzu of the North"—a single vine can grow up to **6 inches per day**. Mile-a-minute has been banned by the CT Legislature (Sec. 22a-381d of the CT General Statutes makes it illegal to transport, cultivate, sell or distribute the species), but populations are still spreading in natural areas and perhaps in your own backyard!

Please help us find, track and control this plant in Connecticut. With your help, we can organize and coordinate the removal of Mile-a-minute Vine before it becomes an even bigger and more costly problem. If you see a vine with **all three** of the characteristics on the front of this card—(1) triangular leaves, (2) small barbs on the stem, and (3) ocrea, **note its location** and **report your findings** using the contact information below.

Contact the Connecticut Invasive Plant Working Group (CIPWG) at **860-486-6448** (Donna Ellis)
-or-

visit www.hort.uconn.edu/mam (click "Report MAM")

For more information, please contact CIPWG or visit www.hort.uconn.edu/cipwg

Photos courtesy of Todd Mervosh, Les Mehrhoff, Hope Leeson, Judy Hough-Goldstein and Renée Sullivan

Mile-a-minute vine information is available on the CT Invasive Plant Working Group (CIPWG) website:

www.hort.uconn.edu/mam/



University of
Connecticut

College of Agriculture and Natural Resources

Department of Plant Science and Landscape Architecture

CIPWG HOME

Home

About mile-a-minute

Species Identification

Similar Species Guide

State Contacts

Distribution Information

MAM Resources

Control Options

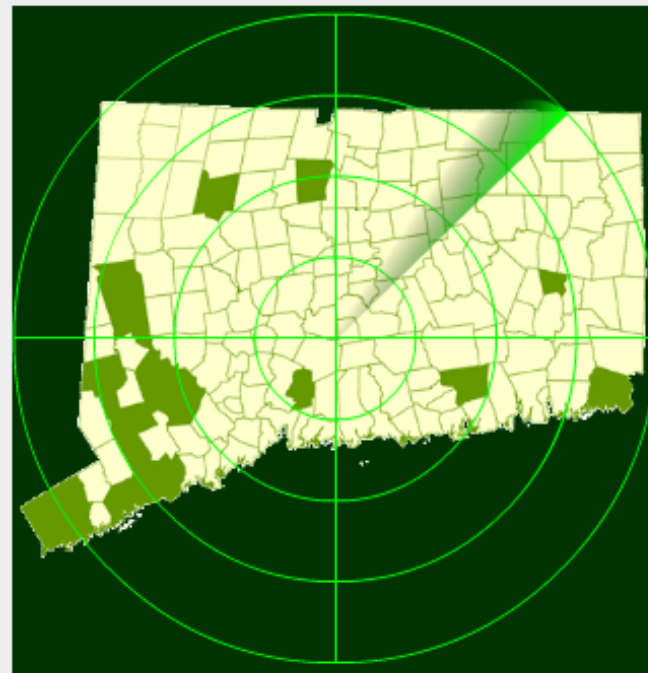
2010 News

*For the Press

Other Invasive Species

-Online Reporting Form-

Welcome to the CT mile-a-minute vine website!



Mile-a-minute detected in towns marked in green

Funded in part by:

- **USDA APHIS**
- **University of Connecticut**
- **The Connecticut Agricultural Experiment Station**

